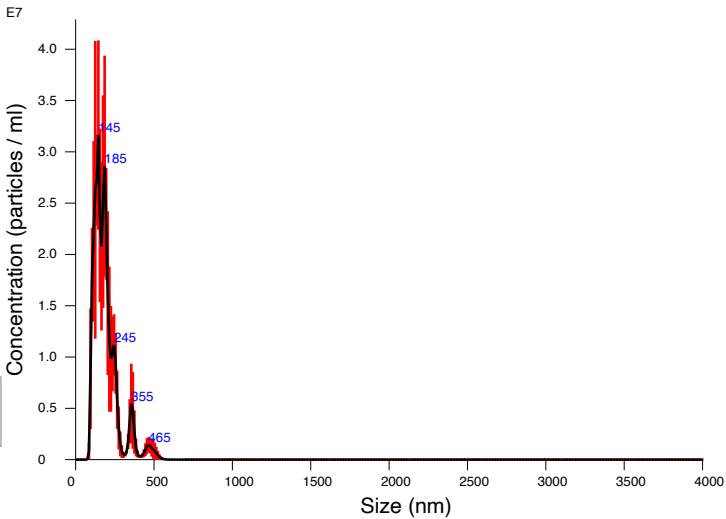


FTLA Concentration / Size graph for Experiment:
Capture 2022-09-26 14-53-16



Averaged FTLA Concentration / Size for Experiment:
Capture 2022-09-26 14-53-16
Error bars indicate + / -1 standard error of the mean

Included Files

Capture 2022-09-26 14-53-35
Capture 2022-09-26 14-54-07
Capture 2022-09-26 14-54-37

Details

NTA Version: NTA 3.4 Build 3.4.4
Script Used: SOP Standard Measurement 04-43-57PM 02~
Time Captured: 14:53:16 26/09/2022
Operator: Ruth
Pre-treatment:
Sample Name: son. = 60s bench (2)
Diluent:
Remarks:

Capture Settings

Camera Type: sCMOS
Laser Type: Blue405
Camera Level: 12
Slider Shutter: 1200
Slider Gain: 146
FPS: 18.7
Number of Frames: 374
Temperature: 22.0 °C
Viscosity: (Water) 1.0 cP
Dilution factor: Dilution not recorded

Analysis Settings

Detect Threshold: 24
Blur Size: Auto
Max Jump Distance: Auto: 8.2 - 9.5 pix

Results

Stats: Merged Data

Mean: 189.5 nm
Mode: 143.6 nm
SD: 80.3 nm
D10: 114.1 nm
D50: 172.0 nm
D90: 275.2 nm

Stats: Mean +/- Standard Error

Mean: 188.2 +/- 11.0 nm
Mode: 170.2 +/- 23.7 nm
SD: 75.8 +/- 10.7 nm
D10: 117.0 +/- 8.6 nm
D50: 174.2 +/- 13.3 nm
D90: 288.9 +/- 36.7 nm
Concentration: 3.70e+08 +/- 2.51e+07 particles/ml
20.2 +/- 1.4 particles/frame
21.9 +/- 1.5 centres/frame